

# Integrate ESET Threat Intelligence feeds into Filigran OpenCTI

## ENRICH YOUR DEFENSES

In the rapidly evolving cybersecurity landscape, the ability to swiftly and accurately identify, analyze and respond to threats is paramount. To address this need, ESET and Filigran have partnered to integrate ESET Threat Intelligence feeds into Filigran's OpenCTI platform. This collaboration aims to provide cybersecurity teams with enhanced capabilities to combat emerging threats through a consolidated, comprehensive and real-time threat intelligence solution.

The integration feeds ESET's extensive threat intelligence, derived from its global endpoint protection network, directly into OpenCTI, thereby enhancing the analytical capabilities of your cybersecurity team.

### KEY BENEFITS

- **High-Value Operational Insights:** ESET's data feeds offer unique insights derived from its extensive endpoint protection network. This data includes real-time telemetry and detailed threat intelligence, both of which are crucial for accurate threat detection and mitigation. OpenCTI offers strong, comprehensive views and correlation capabilities to get maximum and immediate value from ESET's feeds.
- **Contextual Data:** The feeds provide advanced context and, when combined with OpenCTI, enable early-stage detection, allowing analysts to respond to threats with greater precision.
- **Enhanced Early Detection:** ESET's threat intelligence feeds are designed to provide early detection capabilities, helping analysts to identify threats sooner and respond more efficiently.
- **Detailed Analytics:** The integration with OpenCTI enhances analytical capabilities by providing detailed threat intelligence, fast pivoting capabilities and various way to correlate and segregate Intelligence, thus contributing to the accurate assessment and mitigation of potential threats.
- **Standards Compliance:** The integration enhances interoperability between ESET's threat intelligence and OpenCTI's analytical tools through the use of TAXII 2.1 and STIX 2.1 standards. This compliance allows for seamless data exchange and improved threat response workflows.

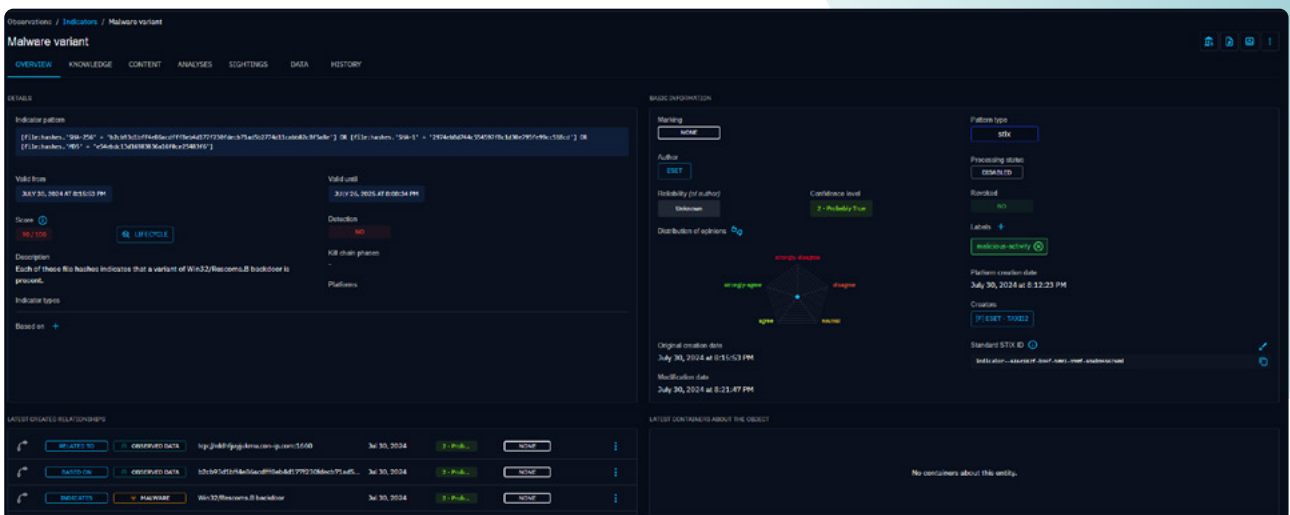
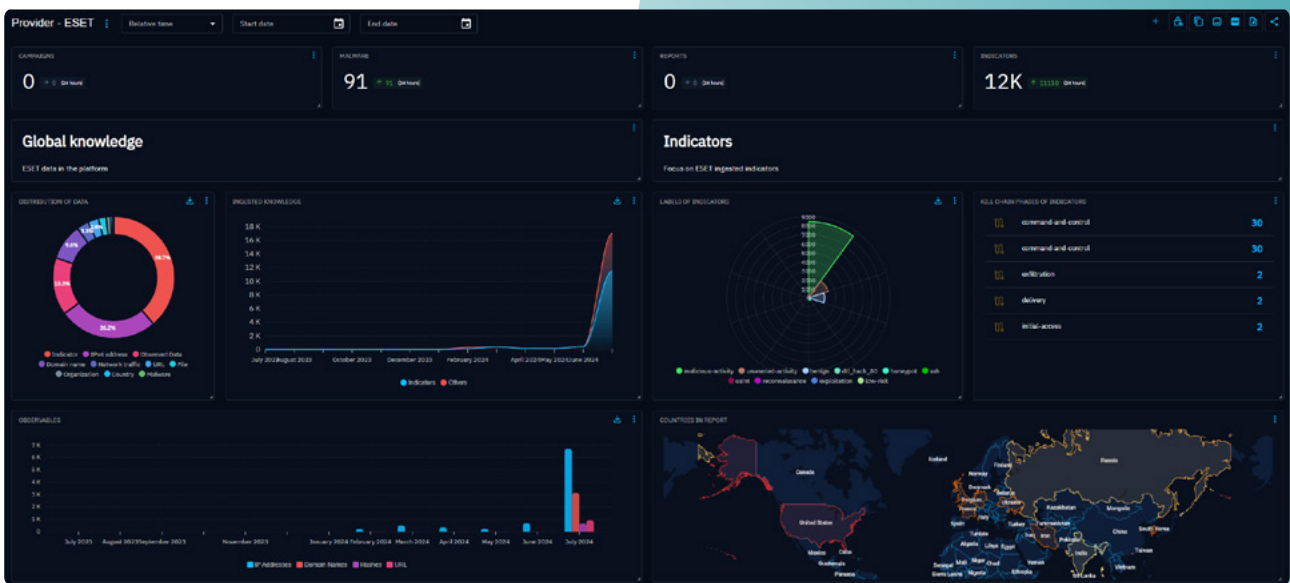
### HOW WILL THIS INTEGRATION HELP YOUR ORGANIZATION STRENGTHEN ITS SECURITY POSTURE?

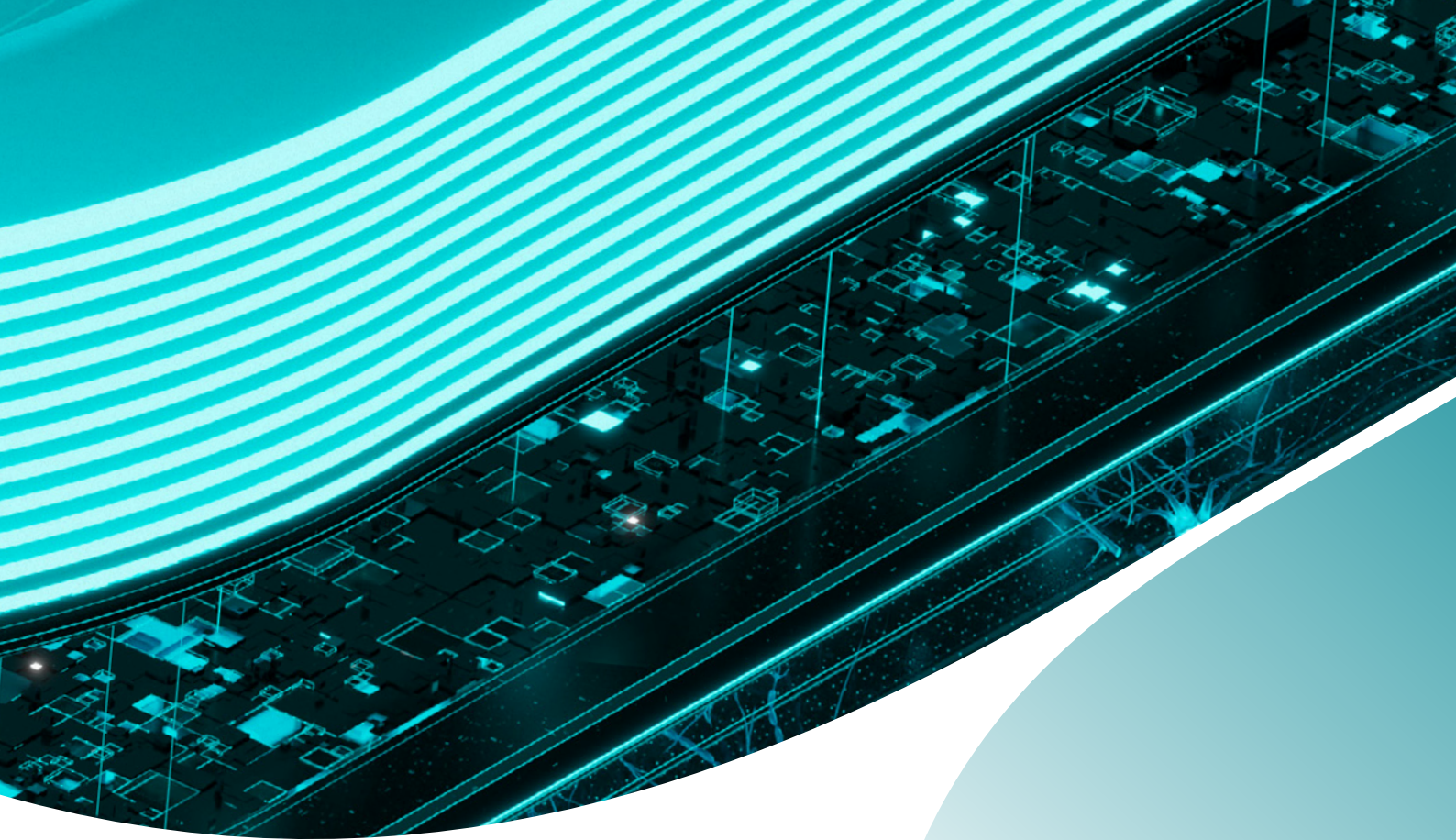
- **Improved Detection:** Enhanced MTTD and MTTR: Leveraging ESET's comprehensive threat intelligence into OpenCTI, your organization can significantly reduce its Mean Time to Detect (MTTD) and Mean Time to Respond (MTTR), ensuring quicker and more effective threat mitigation.
- **Real-Time, Frequent Updates with Current Threat Data:** ESET's feeds ensure that your threat intelligence is always up-to-date, and OpenCTI ensures faster analysis and prioritization, allowing your organization to stay ahead of the latest threats and reduce your attack surface.
- **Actionable Intelligence, Immediate Utilization:** ESET's highly curated data feeds provide actionable intelligence that can be immediately visualized, correlated and utilized within OpenCTI, improving the overall efficiency and effectiveness of threat detection and response efforts.



## ACT NOW TO IMPROVE YOUR THREAT INTELLIGENCE FLOWS

The integration of ESET Threat Intelligence feeds into Filigran's OpenCTI platform represents a significant advance in the field of cybersecurity. By centralizing threat data, providing high-value operational insights, and enhancing analytical capabilities, this partnership empowers cybersecurity teams to effectively detect, analyze and respond to threats in real-time. The collaboration not only improves interoperability and actionable intelligence but also ensures organizations are equipped with the most current and comprehensive threat intelligence available.





## ABOUT ESET

### Proactive defense. Minimize risks with prevention.

Stay one step ahead of known and emerging cyber threats with our AI-native, prevention-first approach. We combine the power of AI and human expertise to make protection easy and effective.

Experience best-in-class protection thanks to our in-house global cyber threat intelligence, compiled and examined for over 30 years, which drives our extensive R&D network led by industry-acclaimed researchers.

ESET PROTECT, our cloud-first XDR cybersecurity platform, combines next-gen prevention, detection, and proactive threat hunting capabilities with a broad variety of security services, including managed detection and response. Our highly customizable solutions include local support and have minimal impact on performance, identify and neutralize known and emerging threats before they can be executed, support business continuity, and reduce the cost of implementation and management.

ESET protects your business so you can unlock the full potential of technology.

---

## ABOUT FILIGRAN

Filigran, the home of OpenCTI and OpenBAS, was founded in October 2022 and stands out in the cybertech ecosystem for its commitment to revolutionizing threat intelligence and its use within cybersecurity teams. Its mission is to develop innovative open-source solutions designed specifically to address the complex challenges organizations face in anticipating cyber risks and threats. Filigran solutions are used by more than 4,500 public and private organizations worldwide.



SOLUTION BRIEF