

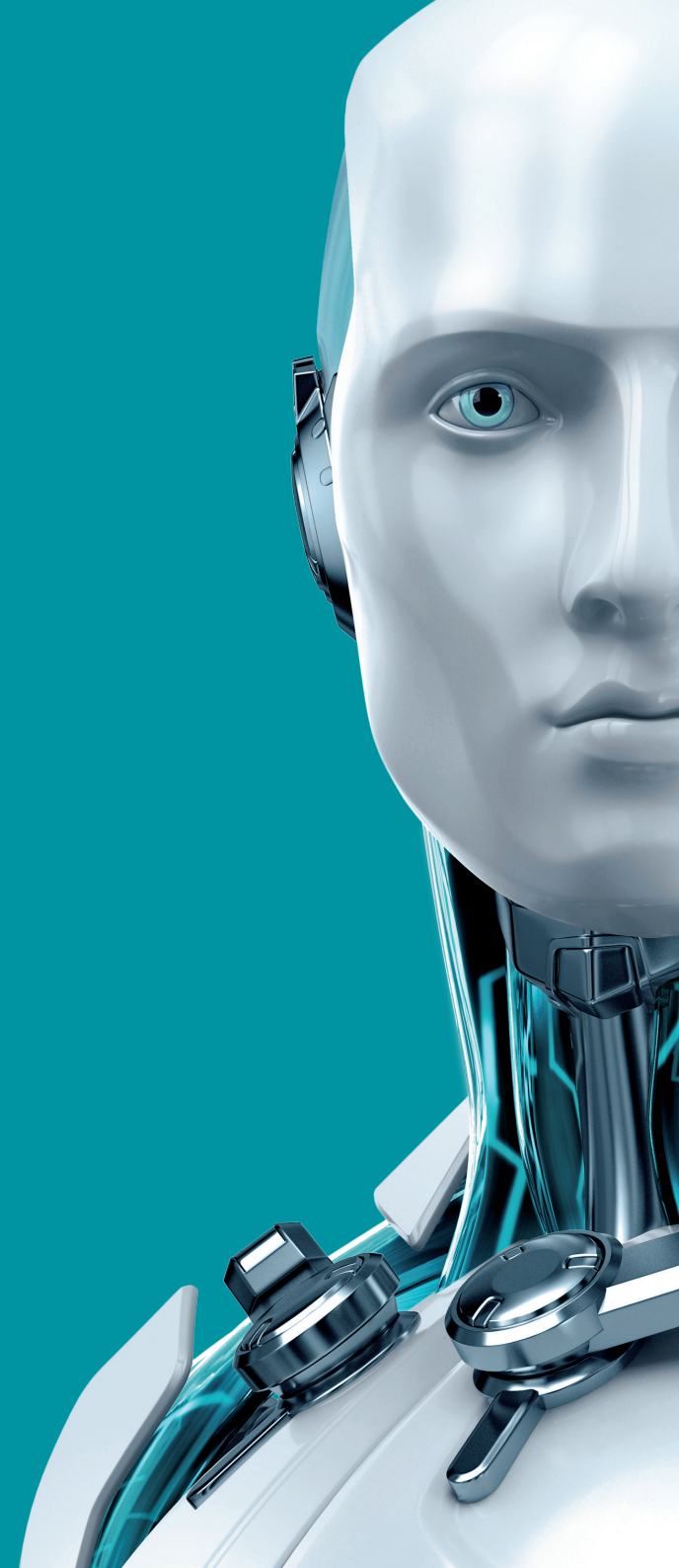


# PARENTAL CONTROL

FOR ANDROID



ENJOY SAFER TECHNOLOGY™





## PARENTAL CONTROL FOR ANDROID

ESET Parental Control for Android protects children who are using smartphones and tablets, and does so in a child-friendly way. It shields them from inappropriate or offensive online content by completely blocking access to select website categories. A more liberal mode makes it possible to just monitor the child's website visits, or following a request, to unblock an app or website that was previously banned. In addition, a useful tool with kids – parents can keep control over the length of time spent using apps or gaming, or block inappropriate apps altogether based on the child's maturity level. In an emergency, a parent can locate the child based on his/her device that's connected to the Internet.

Available in free and premium version.

## Protect your kids on the web

Rely on the features that help you protect children from inappropriate online content.

<b>List of most visited domains</b>	Shows the top visited websites for the last 7 days.
<b>Web Guard</b> <small>AVAILABLE IN PREMIUM</small>	The app automatically blocks predefined website categories, such as adult or offensive content, based on the child's age. You can decide to block additional categories or specific website addresses (URLs).
<b>Safe Search</b> <small>AVAILABLE IN PREMIUM</small>	Automatically filters search results and blocks inappropriate content from popular search engines.
<b>Reports</b> <small>AVAILABLE IN PREMIUM</small>	Provide detailed summary of each of the children's device usage and online activities for the last 30 days.

## Know what apps your kids use and when

Our app-usage features help you make decisions on how children spend time using an Android smartphone or tablet.

<b>Application Guard</b>	Automatically blocks inappropriate applications based on the Google Play content rating or lets parents allow or block any installed applications from the ESET portal or via the ESET Parental Control app in Parental mode.
<b>Time-based app control</b>	Set maximum usage time for the given day, and prohibit access to time-limited applications during specific hours – such as during sleep time or school time.
<b>Instant Block</b>	Immediate block of device activities. Block either time-limited applications or All applications (Only emergency calls will be available)

## Child-friendly communication

Allows you to have an honest dialogue with the child and build trust in the process.

<b>Child-centered interface and communication</b>	Communication takes place via a specially-designed child-friendly interface, using a respectful tone and explaining what is happening and why. We believe in openness. The kid on whose device our product is installed always knows the scope of parental control activities in effect.
<b>Unblock request</b>	The child can send a request to allow access to specific apps or websites – directly from the blocking screen. The parent will receive the notification by email, through the app (in parental mode), or via my.eset.com.
<b>Kids-facing side of the app</b>	Upon clicking on the app's icon, the child will see the current status – how much time is left for playing games, as well as what's being currently monitored on their device.

## Reach your kids any time

Get through to the kid on the device and take the guesswork out of the child's whereabouts.

---

<b>Battery Protector</b>	Setup battery level, when device will block all time-limited applications to save battery for main accessibility.
<b>Child locator</b> <small>AVAILABLE IN PREMIUM</small>	Check the child's current location at any time via my.eset.com or application in Parental mode. This feature displays the location of kids' devices connected to the Internet. Parents can check individual locations in each child's profile.
<b>Geofencing</b> <small>AVAILABLE IN PREMIUM</small>	Allows parents to set up zones and sends alerts when the child oversteps them.

---

## Easily manage Parental Control across Android devices

Do it all from one place – always know what's happening and interact with the child.

---

<b>History log</b>	The main purpose of History log is to provide parents with an overview of important changes in rules and settings. Parents can check all significant changes and know if a child has been cheating by using their parents' devices or credentials to change the rules, such as the time allowed for playing.
<b>One family = One license</b>	Each license is linked with my.eset.com account, with the same credentials used to activate the application on all children's and parent devices. In addition, the portal serves as a hub for managing the app and reports.
<b>Synchronization with my.eset.com</b>	See the summarized reports and the current status of all children's profiles and devices on my.eset.com.
<b>The parent-facing side</b>	Parents can easily manage rules, respond to child requests and see all activity reports in the ESET Parental Control app set to Parent mode. They can also use the my.eset.com portal from their PC or iPhone.

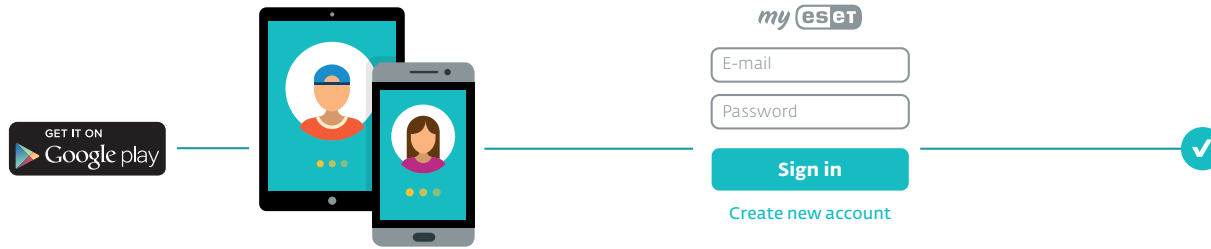
---



Copyright © 1992 – 2021 ESET, spol. s r. o. ESET, ESET logo, ESET android figure, NOD32, ESET Smart Security, SysInspector, ThreatSense, ThreatSense.Net, LiveGrid, LiveGrid logo and/or other mentioned products of ESET, spol. s r. o., are registered trademarks of ESET, spol. s r. o. Mac and the Mac logo are trademarks of Apple Inc., registered in the U.S. and other countries. Other here mentioned companies or products might be registered trademarks of their proprietors. Produced according to quality standards of ISO 9001:2008.

# Quick Start

## ① Download & Activate



**Download** ESET Parental Control **onto your children's devices** from the Google Play Store.

**Activate** the app using your **my.eset.com** login.

*Don't have one?  
No problem – you'll be guided through the sign-up process.*

## ② Manage Your Kids' Security

